



# INSTRUCTIONS

## WORLD CLOCK GC-5

### INTRODUCTION

Congratulations on the purchase of the GC-5 Global Clock as a new accessory for your amateur radio shack.

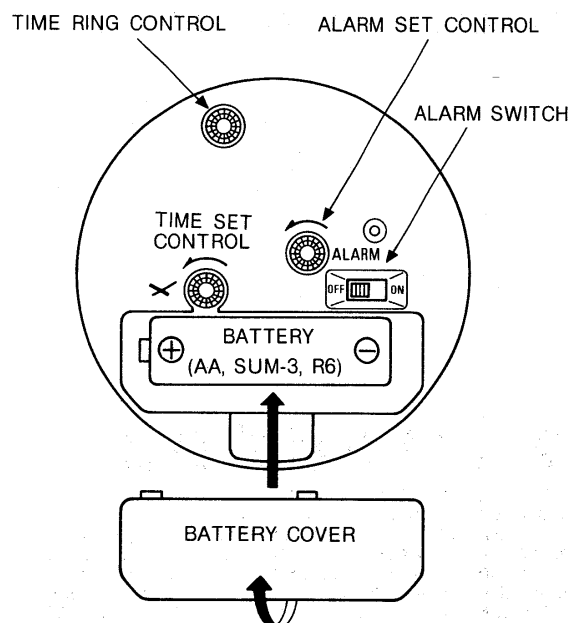
The Global Clock will add to your operating convenience and make DX operation with your transceiver or communications receiver more enjoyable by rapidly providing time information for every region in the world.

### HOW TO USE

#### ■ INSERT DRY BATTERY

One battery (AA, SUM-3, R6) is used to operate the clock. Remove the battery cover from the rear panel of the clock and install the battery in the holder in accordance with the engraved diagram.

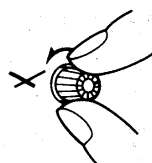
Carefully check that the battery polarity (+ and -) is correct, or the clock will not function.



#### ■ SET THE CLOCK

Set the time by turning the TIME SET CONTROL on the reverse side of the clock movement. The control may be turned clockwise or counterclockwise.

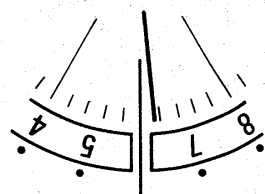
Use the orange colored scale on the face of the clock when setting the time.



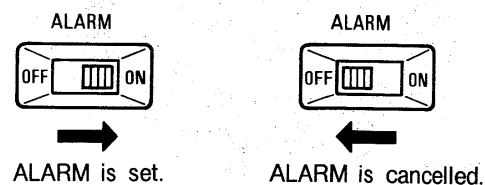
#### ■ SET THE ALARM

1. Set the alarm time by turning the ALARM SET CONTROL on the reverse side of the clock. Each increment of the alarm hand represents ten minutes.
2. Slide the ALARM SWITCH ON. The switch is also on the rear of the clock.
3. Slide the ALARM SWITCH OFF when you wish to turn the alarm off.

**NOTE:** The alarm sounds whenever the alarm time matches the actual time if the ALARM SWITCH is left ON. Since this shortens the battery life, DO NOT forget to slide the switch OFF when the alarm function is not required.



#### [ALARM SWITCH OPERATION]

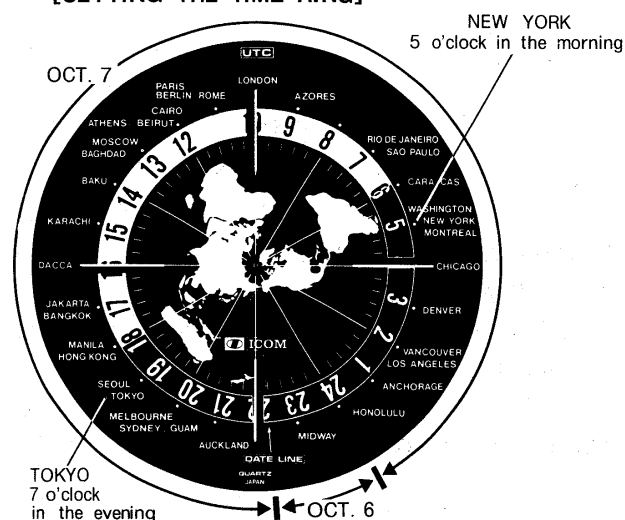


#### ■ READING WORLD TIME

It is possible to read the local time of any country in the world by adjusting the TIME RING CONTROL on the reverse side of the clock. The world time is indicated using the 24 hour time system. The hour digits printed on the white background represent day times and those hours on the black background represent night times.

In addition to the time, it's easy to know the date in your country of interest.

#### [SETTING THE TIME RING]



#### [EXAMPLE]:

It is 7 o'clock in the evening (1900 hours) in TOKYO. You wish to know the time in NEW YORK.

1. Turn the TIME RING CONTROL to set the digits "19" on the TIME RING next to the TOKYO dot. This is the time where you are now.
2. Read the indicated time in NEW YORK from the TIME RING. The time is 5 o'clock in the morning (0500 hours).

#### [EXAMPLE]:

It is 12 o'clock noon on October 6th in LOS ANGELES. You wish to know the time and date in LONDON.

\*A new date begins at the DATE LINE. All areas which lie in a counterclockwise direction from the DATE LINE to the digits "24" on the TIME RING have the same date. All other areas in the world have the following day's date.

1. Turn the TIME RING CONTROL to set the digits "12" on the TIME RING next to the LOS ANGELES dot. This is the time where you are now on October 6th.
2. Read the indicated time in LONDON from the TIME RING. The time is 8 o'clock in the evening (2000 hours) on the same day (October 6th).

### SPECIFICATIONS

Power Source:	One dry battery (AA, SUM-3, R6)
Time Accuracy (at 25°C):	Within ±20 seconds/month
Alarm Accuracy:	±5 minutes from set time
Battery Life:	About one year
Usable Temperature	-10°C to +50°C (+14°F to +122°F)

#### ■ PRECAUTIONS

\* Avoid using the clock:

1. Where temperatures over +50°C or under -10°C are encountered. For example, DO NOT use the clock in areas exposed to direct sunlight or near heat-producing devices such as heaters and ranges.
2. In humid or moist places, including bathrooms.
3. In strong magnetic fields, such as near televisions or speakers, or where vibration, from motors for example, is present.

\* Replace the battery with a new one every year, even if the clock is still operating.

\* DO NOT open the clock movement since this may damage the clock.

\* Clean the clock surfaces with soapy water when necessary. DO NOT use alcohol, benzine or thinner.



**ICOM INCORPORATED**  
6-9-16, KAMIHIGASHI, HIRANO-KU,  
OSAKA 547, JAPAN